



# Valve Flange Collection



## Ball Valve

Koneksi: ANSI / JIS  
Material Disc: WCB / Cast Iron / SS304  
Material Body: WCB / Cast Iron / SS304  
Material Handle : Polycarbonate  
Seat: PTFE



## Y Strainer

Koneksi: ANSI / JIS / PN  
Body material : ASTM A216 WCB / Cast Iron  
Filter material : SS304  
Seat: Graphite



## Gate Valve

Koneksi: ANSI / JIS / PN  
Material Disc: A216 WCB / Cast iron  
Ring disc :Bronze  
Material Body: WCB / Cast Iron  
Bonnet: A216 WCB / Cast Iron  
Seat: Graphite



## Foot Valve

Koneksi: JIS / Drat  
Body Material : Cast iron / Stainless  
Filter material : Iron chromed



## Swing Check Valve WCB

Koneksi: ANSI / JIS / PN  
Material Flap : A216 WCB / Cast Iron  
Material Body: Besi / WCB / Cast Iron  
Bonnet: A216 / Cast Iron  
Seat: Graphite



## Pressure Reducing Valve

Koneksi: JIS / PN  
Material Disc: Cast iron Ring disc  
:Bronze  
Material Body: Cast Iron  
Bonnet: Cast Iron  
Seat: Graphite

# PT. APINDO MITRA SELARAS



# Butterfly Valve Collection



## Butterfly Valve Cast Iron

### EPDM

Koneksi: ANSI / JIS / PN (Universal)  
Material Disc: SS304 / CF8  
Material Body: Besi / Ductile Iron  
Material Lever : Cast iron  
Shaft : SS401  
Seat: EPDM



## Butterfly Valve Cast Iron

### PTFE

Koneksi: ANSI / JIS / PN (Universal)  
Material Disc: SS316 / CF8M  
Material Body: Besi / Ductile iron  
Material Lever : Cast iron  
Shaft : SS401  
Seat: PTFE



## Butterfly Valve Stainless

### Steel 304

Koneksi: ANSI / JIS / PN (Universal)  
Material Disc: SS316 / CF8M  
Material Body: SS304 / CF8 Material  
Lever : SS304  
Shaft : SS304  
Seat: PTFE

# PT. APINDO MITRA SELARAS



# Valve Stainless Screw



## Ball Valve Sankyo 1PC Body

Jenis Drat: BSPT  
Material Disc: SS316 (CF8M)  
Material Body: SS316 (CF8M)  
Stem: SS316 (CF8M)  
Handle: SS304  
Seat: PTFE



## Gate Valve Stainless

Material Body: SS316  
Bonnet: SS316  
Stem: SS316  
Disc: SS316  
Packing & Gland Nut: SS316  
Handle: ALUMINIUM  
Stem Washer: SS 316



## Ball Valve Sankyo 2PC Body

Jenis Drat: BSPT  
Material Disc: SS316 (CF8M)  
Material Body: SS316 (CF8M)  
Stem: SS316 (CF8M)  
Handle: SS304  
Seat: PTFE



## Y Strainer Drat

Jenis Drat: BSPT  
Material: SS316  
PRESSURE : #800



## Ball Valve Sankyo 3PC Body

Jenis Drat: BSPT  
Material Disc: SS316 (CF8M)  
Material Body: SS316 (CF8M)  
Stem: SS316 (CF8M)  
Handle: SS304  
Seat: PTFE



## SWING CHECK VALVE

Jenis Drat: BSPT  
Material: ALL STAINLESS 316  
Pressure: #200

# PT. APINDO MITRA SELARAS



# Marine Valve Collection



## Air Vent Cast Iron 5K

Air Vent Head  
Material Body : Cast Iron  
Connection : JIS 5K Flange End  
Marine Standard



## Gate Valve Cast Iron 5K

Material: Cast Iron  
Pressure Rate: 150 psi  
Connection: JIS 5K



## Globe Valve Cast Iron 5K

Globe valve  
Material : Cast iron  
Ukuran : 6"  
Koneksi : Flange JIS 5K



## Gate Valve Bronze 5K

Design Standard: JIS B2026  
Body Material: Bronze.  
Nominal Diameter: 4"  
Pressure: 5K  
End Connection: FF  
Mode of Operation: Handwheel



## Angle Valve Bronze 5K

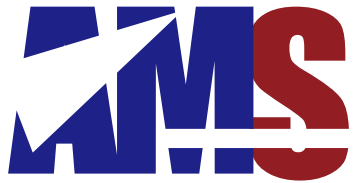
Marine Angle valve  
Body material : Bronze BC6  
Disc material : Bronze BC6  
Stem material : Brass C3771BD  
Flange connection : JIS5k



## Angle Valve Cast Iron 5K

Material : Cast Iron  
Koneksi : Flange Jis 5k

# PT. APINDO MITRA SELARAS



# Fitting Flange Collection



## Fitting Drat Stainless Steel

Material: SS304  
Pressure Rate: 150 psi  
Thread: BSPT



## Fitting Las Stainless

Material : Carbon Steel (can be galvanized) / SUS304 / SUS316  
Thickness : SGP (sch10) - sch80  
Model : Welded / Seamless



## Fitting Las Besi

Material : Carbon Steel (can be galvanized) / SUS304 / SUS316  
Thickness : SGP (sch10) - sch80  
Model : Welded / Seamless



## Flange Weld

Material : CS / SS304 / SS316  
Type : JIS 5k-20k / ANSI150-300 / PN16-40  
Model (JIS10k) : FF / BLIND  
Model (PN16) : FF / SORF / BLIND

Model:  
FF / SORF/ WNRF / BLIND

# PT. APINDO MITRA SELARAS



# Sanitary Products

## Valve Sanitary

Material : SS316

Type : Ball, Sight Glass, Gate, Ferrule, etc



## Fitting Sanitary

Material : SS316

Type : Welded

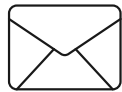


**PT. APINDO MITRA SELARAS**

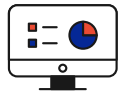


# Terima Kasih!

Jangan ragu menghubungi kami  
jika ada pertanyaan.



[sales@kseindonesia.com](mailto:sales@kseindonesia.com)  
[cs@kseindonesia.com](mailto:cs@kseindonesia.com)



[www.kseindonesia.com](http://www.kseindonesia.com)



**Serang Office** : Kompl. Lebak Indah Griya Asri Blok D4-D5 No.17 & No.05  
Waringin Kurung - Kramatwatu Serang, Banten 42161

**Cilegon Office** : Jl. Raya Pondok Cilegon Indah Ruko Cilegon City Square  
Blok I No. 7 Kedaleman - Cibeber Cilegon, Banten 42422

**Workshop** : Jl. Sultan Syahrir Kubang Sepat Citangkil No.105  
Cilegon, Banten 42441

## PT. APINDO MITRA SELARAS